



OneButton™ Inspect & Measure Tool



Unlock the true potential of your imagery

Inspect and Measure Tool (IMT) lets you closely inspect and accurately measure features and objects in your imagery by eliminating all perspective and lens distortion dynamically. The product “rectifies imagery on the fly.” And since it is integrated with the Esri™ GIS platform, it can seamlessly access your image data either on a local machine or an ArcGIS server.

IMT supports agnostic, open data sources through standard imagery and orientation data formats. Sub-pixel positional accuracy can be achieved for the imagery through automatic aerial triangulation, ground control, and bundle block adjustment using OneButton Standard or Professional Editions or any third party photogrammetric product of your choice.

(continued)

*“A new way
to closely
inspect assets
using aerial
imagery.”*

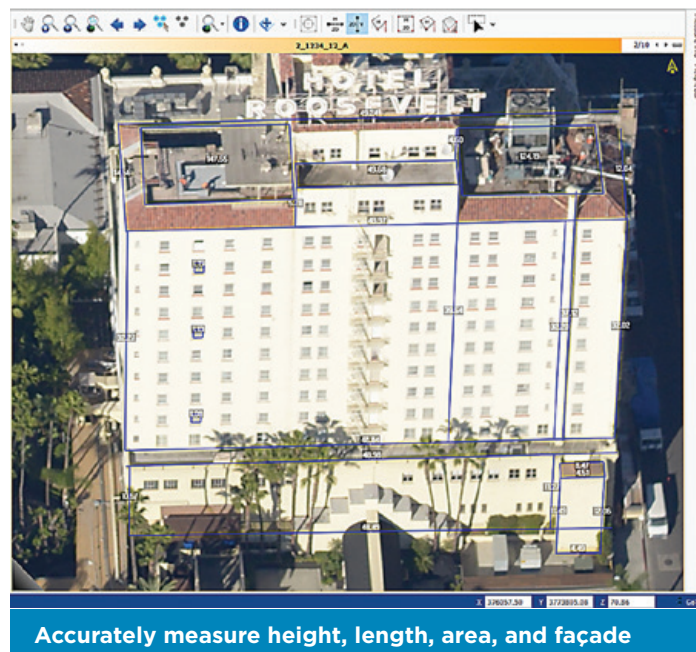
www.icaros.us

IMT is a tool created to support users' needs to inspect objects closely using collected aerial imagery instead of making a field visit. IMT can precisely inspect and measure objects without leaving your desktop.

Product features include:

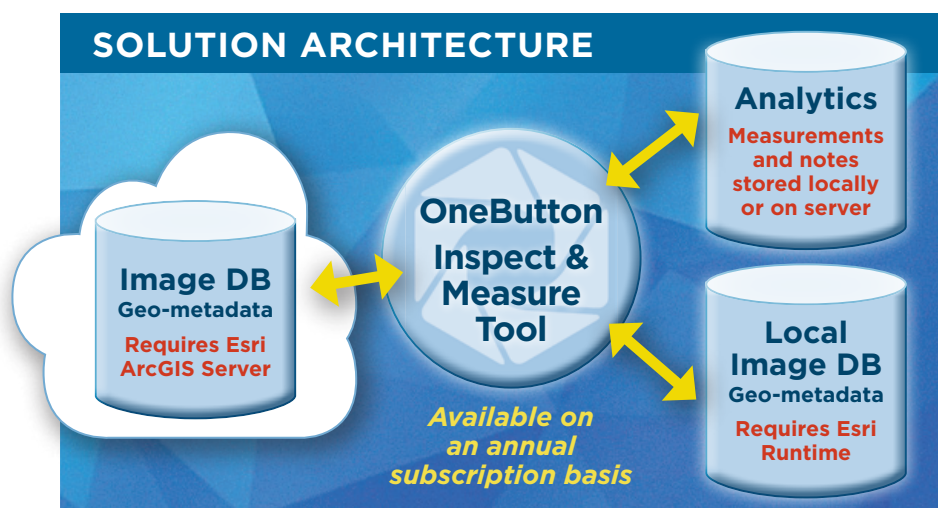
- **Navigate imagery by location and orientation:**
Allows user to quickly find imagery of a point of interest, easily change view perspectives, and zoom/pan images.
- **Measure horizontal and vertical features:**
Accurately measure linear and area features in 2D space within a single image. Tools support structure displacement enabling accurate measurements on roof tops.
- **Measure complex 3D features:** Calculate area, length, slope and azimuth of features such as sloped roofs, and building facades in 3D space through multi-image triangulation.
- **Integrate ArcGIS software and data:** Native support for all Esri GIS datasets including geodatabases, feature styles, and ArcMap (mxd) document. Inspect while viewing different layers in your ArcGIS database.
- **Uses projected coordinate space:** Direct support user preferred map projection (i.e. UTM, state plane) without need for transformation.

(continued)



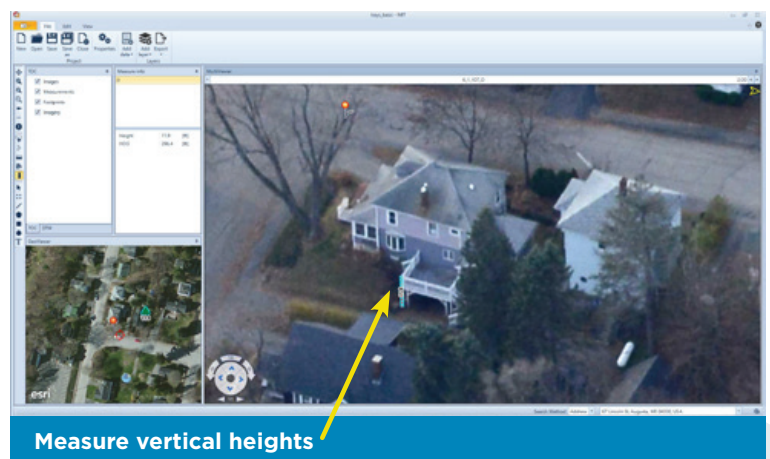
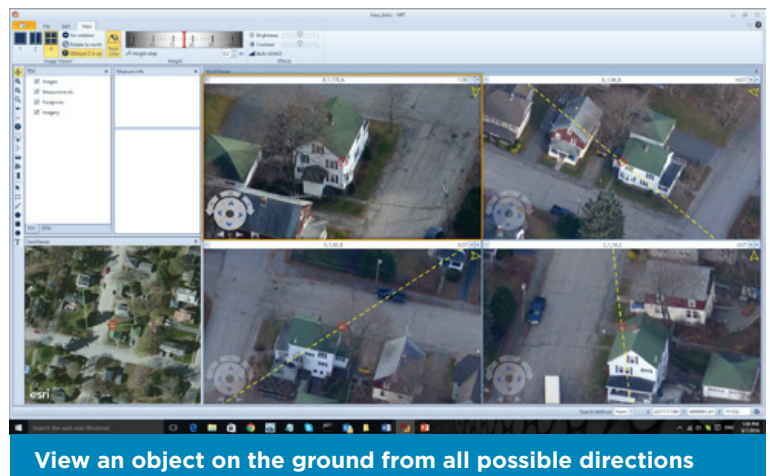
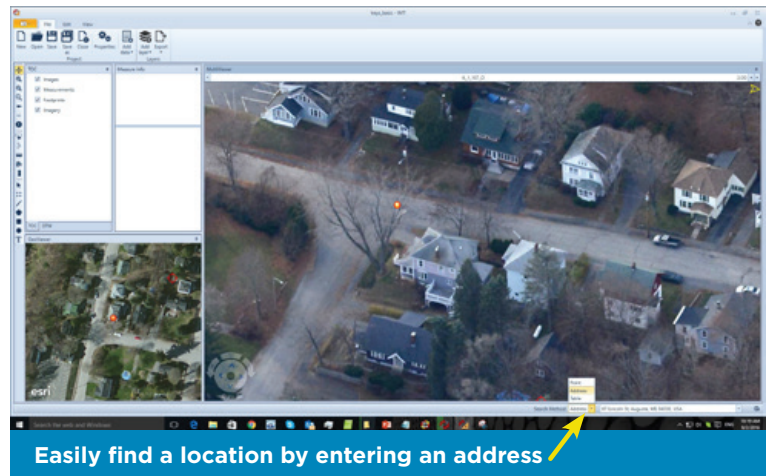
“OneButton Inspect and Measure Tool provides powerful, yet easy-to-use features for accurate measurement needed for the detailed property tax analysis performed by the county’s Property Appraiser team and by many other users across our county government as well. Since the software is integrated with Esri’s ArcGIS, it directly leverages the County’s past investments in aerial imagery and enterprise GIS.”

Kay Ehas
Chief Administrative Officer
Duval County, Florida



www.icaros.us

- **Easily find a location** by either entering an address, coordinates or by searching geospatial data layers within your Esri ArcGIS environment (e.g. Parcels geo-database)
- **Precise image geo-registration:** Incorporates image position metadata enhanced through ground control and automatic aerial triangulation created using OneButton.
- **Agnostic camera system/industry standards support:** Vendor independence through imagery collected from commonly available camera systems and data formats.
- **Supports imagery for non-visible bands:** Collect imagery from any wavelength and display it in the Inspect and Measure Tool for continued analysis
- **Supports Thermal Imagery:** Collect thermal imagery and RGB together and display them “fused” together in the Inspect and Measure Tool for continued analysis
- **Integrates with Harris ENVI®:** Perform image classification, change detection, and feature extraction using ENVI image analytics software and then display in the Inspect and Measure Tool.



COMPUTING ENVIRONMENT REQUIREMENTS

Hardware, O/S, and Esri Products
Must Be Purchased Separately

Hardware	Supported MS Windows Versions	Supported Esri Versions
Intel (i-Generation) 8 cores or more	Windows 7,10	ArcGIS Server 10.3

“Together, OneButton Professional Edition and OneButton Inspect and Measure Tool provide the software foundation required to offer county governments a solution to tax assessment, emergency response, permitting, zoning, planning and many other functions. It is at the very heart of our image collection and county governments services offering. The Icaros team is excellent technically and easy to work with.”

Frank Wilson
CEO, ControlCam

Icaros' mission is to help people make better decisions using current and accurate geospatial information. Our technology and know-how enable our clients and partners to utilize remote sensing from both manned aircraft and from drones to solve challenging problems related to everything from farming, forestry, and land use, to the environment, facility inspection, corridor monitoring and city planning. In a rapidly changing technology ecosystem, Icaros' solutions make aerial geospatial information useful and accessible at price points that enable innovative new applications. The Fairfax, Virginia based company is an Esri® Silver Tier Partner and a Harris Geospatial ENVI Analytics partner.

For more information contact:
www.icaros.us
info@icaros.us
+1(703)268-5393

